

contemporary teaching and learning meet creative library design

two examples, two schools of thought

the changing nature of education

"Because the 21st century society needs to be an agile, 'learning society', so too do our schools.

This requires dramatic shifts in approaches to teaching and learning and to the shape of schools themselves"

Valerie Hannon
Board Director of the Innovation Unit
United Kingdom



drivers of education change

“The Untouchables”

What kind of jobs can't be:

- Outsourced?
- Replicated?
- Digitized?

Specializers (brain surgeon)
Localized and anchored

1. Great collaborators and orchestrators
2. Great synthesizers, mashers (Steve Jobs)
3. Great adapters
4. Great explainers
5. Great leveragers of technology
6. Environmentalists
7. Passionate personalizers
8. Maths lovers
9. Great localizers

“Learning in a Flat World” Tom Friedman



Natural powerful learning happens when it is

1. Personally meaningful
2. Integrated
3. Coherent
4. Transferable
5. Transformative



contemporary teaching and learning meet **creative library design**

two examples, two schools of thought

four key issues for school libraries:

1.2.3.4.

design and pedagogy are connected!

21C education design principles:

- 1. form follows function**
- 2. enhance the learning experience**
- 3. able to be reconfigured**

1.2.3.4.

how to think about space

space:

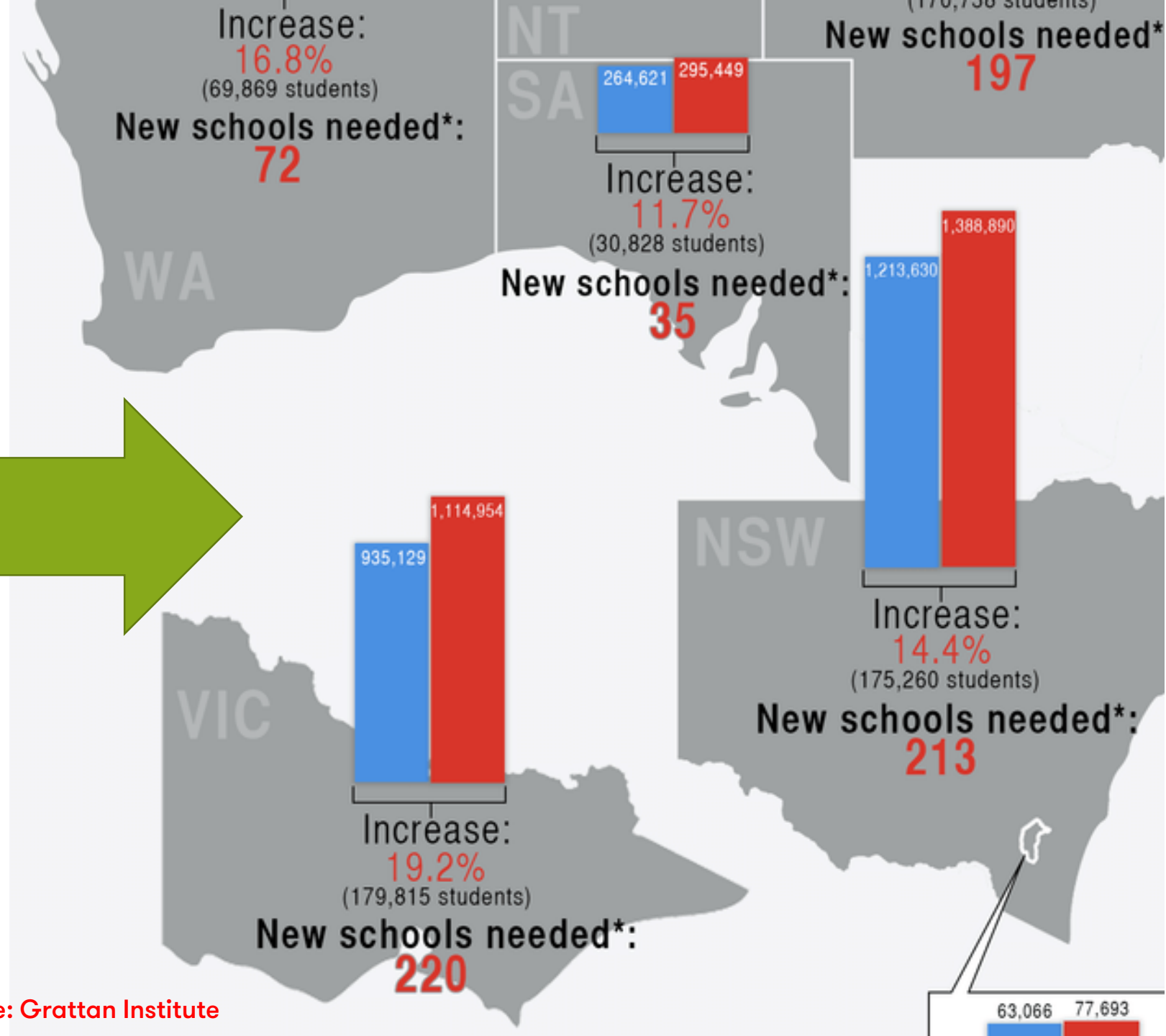
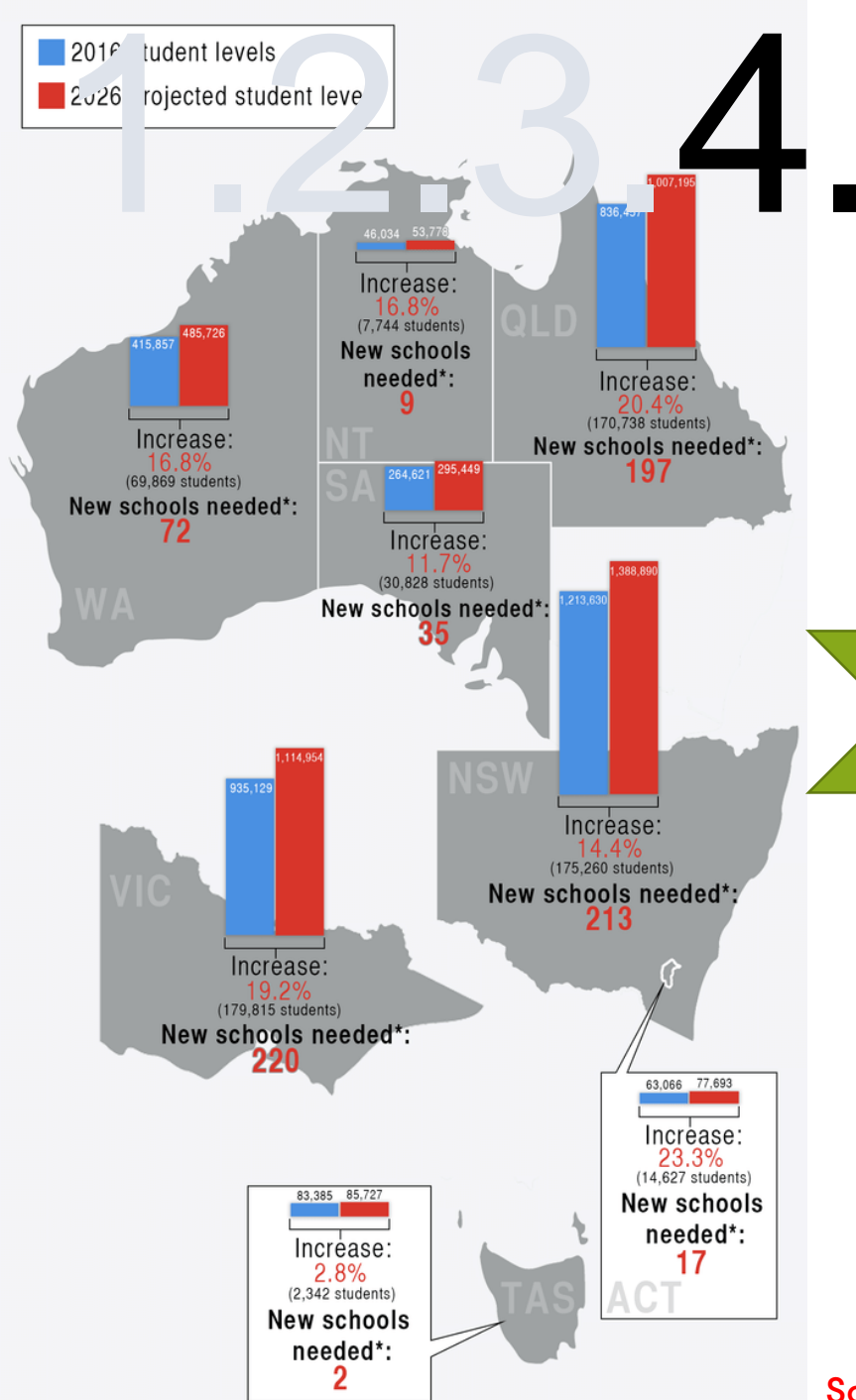
1. conveys the culture and ethos of the organisation
2. defines behaviours

“Behaviour, not space, is enclosed by architecture ...”

Bechtel, R. B. (1977). Enclosing behaviour (Vol. 31). Stroudsburg, Pennsylvania: Dowden, Hutchinson & Ross, Inc.

1.2.3.4.





Source: Grattan Institute

765 school libraries by 2026!

400,000
sqm

1.4bn
\$

20
MCG's

45
Dockland Libraries

contemporary teaching and learning meet creative library design

two examples, two schools of thought

A wide-angle photograph of a modern library interior. The space features a high ceiling with a complex wooden slat structure and integrated linear lighting. A large, multi-level red carpeted seating area with light wood paneling is the central focus, where several students are sitting and studying. To the right, there are long tables with black chairs near large windows that offer a view of the outdoors. Two students in school uniforms are walking in the foreground on the left. The floor is made of light-colored wood planks.

sophia library

st columba's college, essendon

What we want to achieve with this project

In reimagining our Library, we want it to be a.....

1. Centre of Student Learning

2. Pedagogical Exemplar

Window into how we value learning and teaching at St Columba's College

3. Student Centred space

somewhere students want to go to, a space which challenges their perception of what a library is

4. Social place

a space where learning is able to happen across years levels, where students and teachers can be seen working together, one which promotes the learning relationships

5. Librarian Role

Promotes and maximizes the expertise of teacher librarians and their role in improving student outcomes



Pedagogical Planning

A series of interconnected learning spaces designed to support students engaged in the four phases of the information literacy process

locate

- **Locating**
- dedicated teaching space especially for younger year levels

select

- **Selecting**
- lots of visuals, checklist, flowcharts, skill development in this process needs a larger group, collaboration on what found, access to web, not always in the common teaching space, demonstrate tools

organise

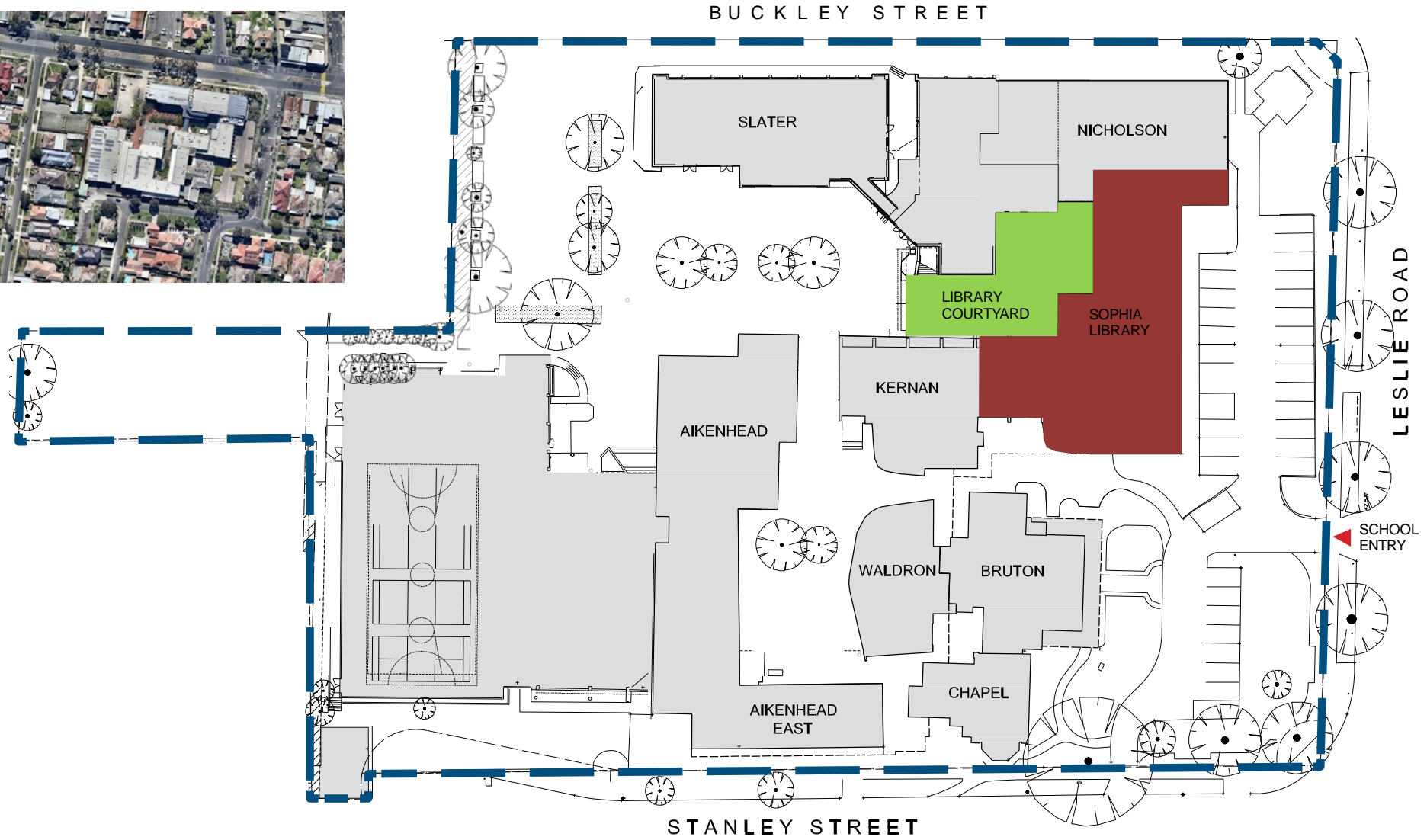
- **Organizing**
- allow for individual and small groups maximum of 4pp

present

- **Presenting**
- Space for students to present the results of “locating / selecting / organizing” and to summarize their findings

St Columba's College

Site Location



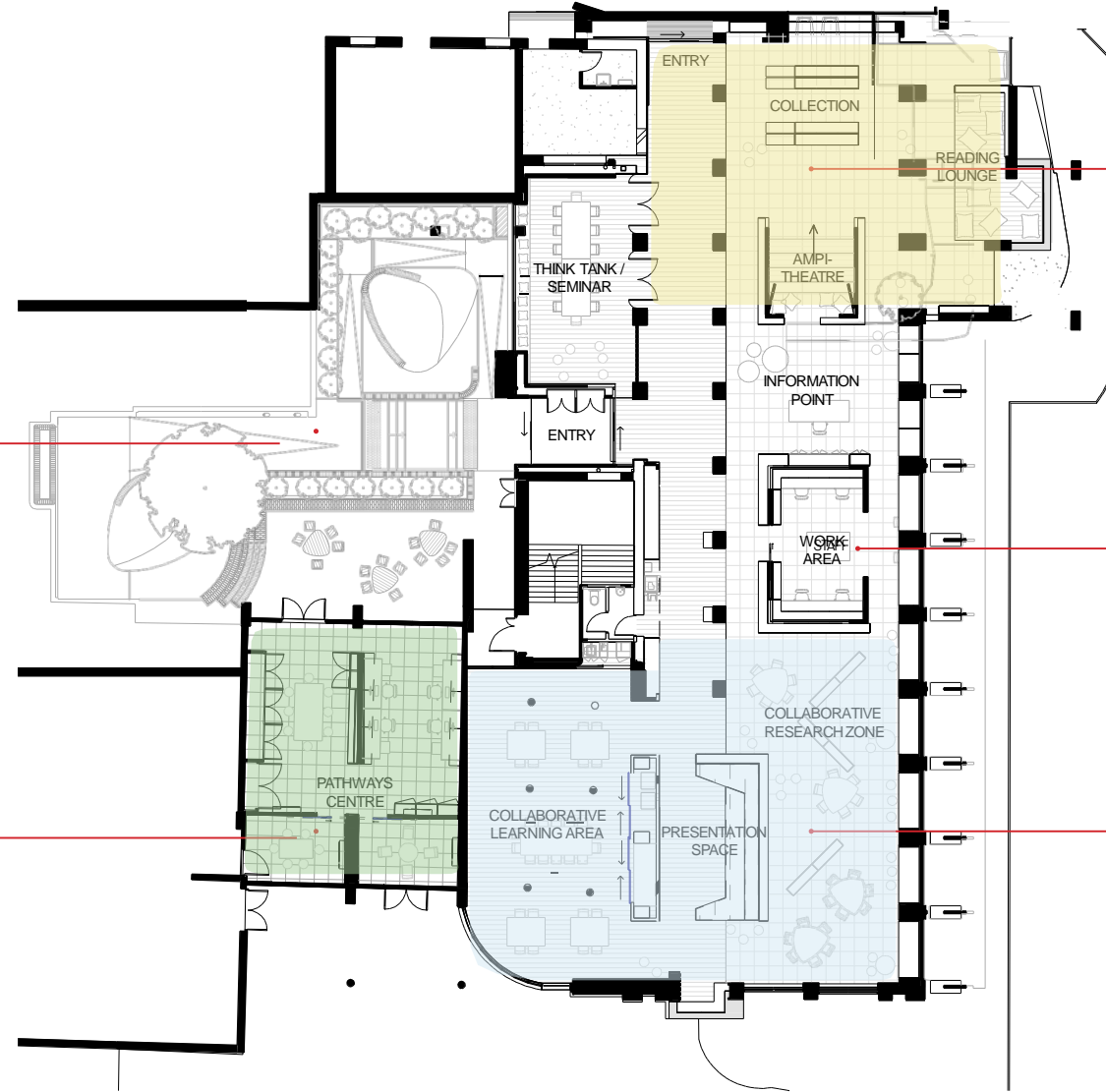
Sophia Library Zoning Diagram

Library Courtyard

- Group gathering spaces,
social + independent study

Pathways Centre

- Work and meeting spaces for
staff and students exploring
student careers + pathways



Wider Reading Area

- Learning zones for group discussion +
presentation
- Reading + relaxation areas
- Fiction, magazine + picture book
collections

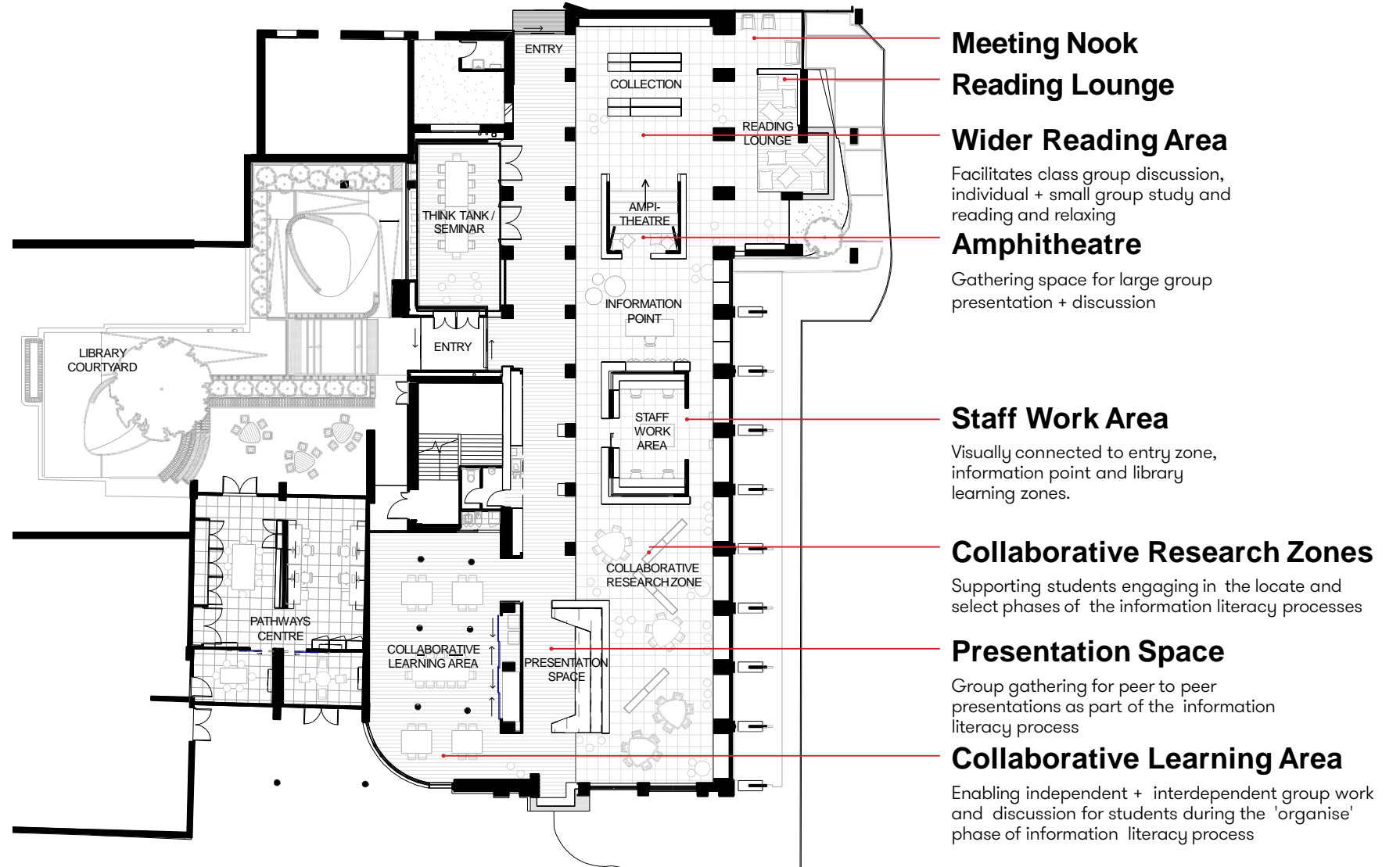
Staff Work Area

Information Literacy Area

- Learning zones supporting students
locating, selecting, organising +
presenting information
- Non-fiction, reference + newspaper
collections

Sophia Library

Learning Areas



Sophia Library

Presentation Space + Collaborative Research Zone



Presentation Space

Purpose

- Large group gathering
- Presentation + instruction
- Group discussion

Facilities

- Seating for up to 50 students
- Pin up space, writable surfaces + media
- Strong connection to adjacent learning areas + resources

Learning experience

- Peer presentations
- Discussion + debate
- Collaborative + independent research



Presentation +
gathering space

Collection
shelving

Collaborative
research zone

Sophia Library

Presentation Space + Collaborative Learning Area



Presentation Space

Purpose

- Large group gathering
- Presentation + instruction
- Group discussion

Facilities

- Seating for up to 50 students
- Pin up space, writable surfaces + media
- Strong connection to adjacent learning areas + resources

Learning experience

- Peer presentations
- Discussion + debate
- Collaborative + independent research



Large screen with
writable surfaces

Newspaper
collection

Adjacent
Collaborative
learning area

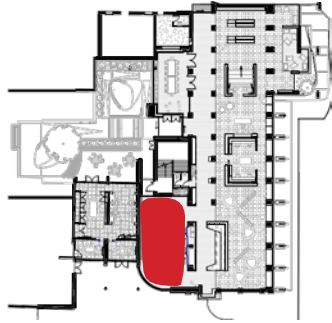
Resource
storage
wall behind

Fold up laptop
shelf for
presenter

Tiered group
seating for up
to 50 students

Sophia Library

Collaborative Learning Area



Collaborative Learning

Purpose

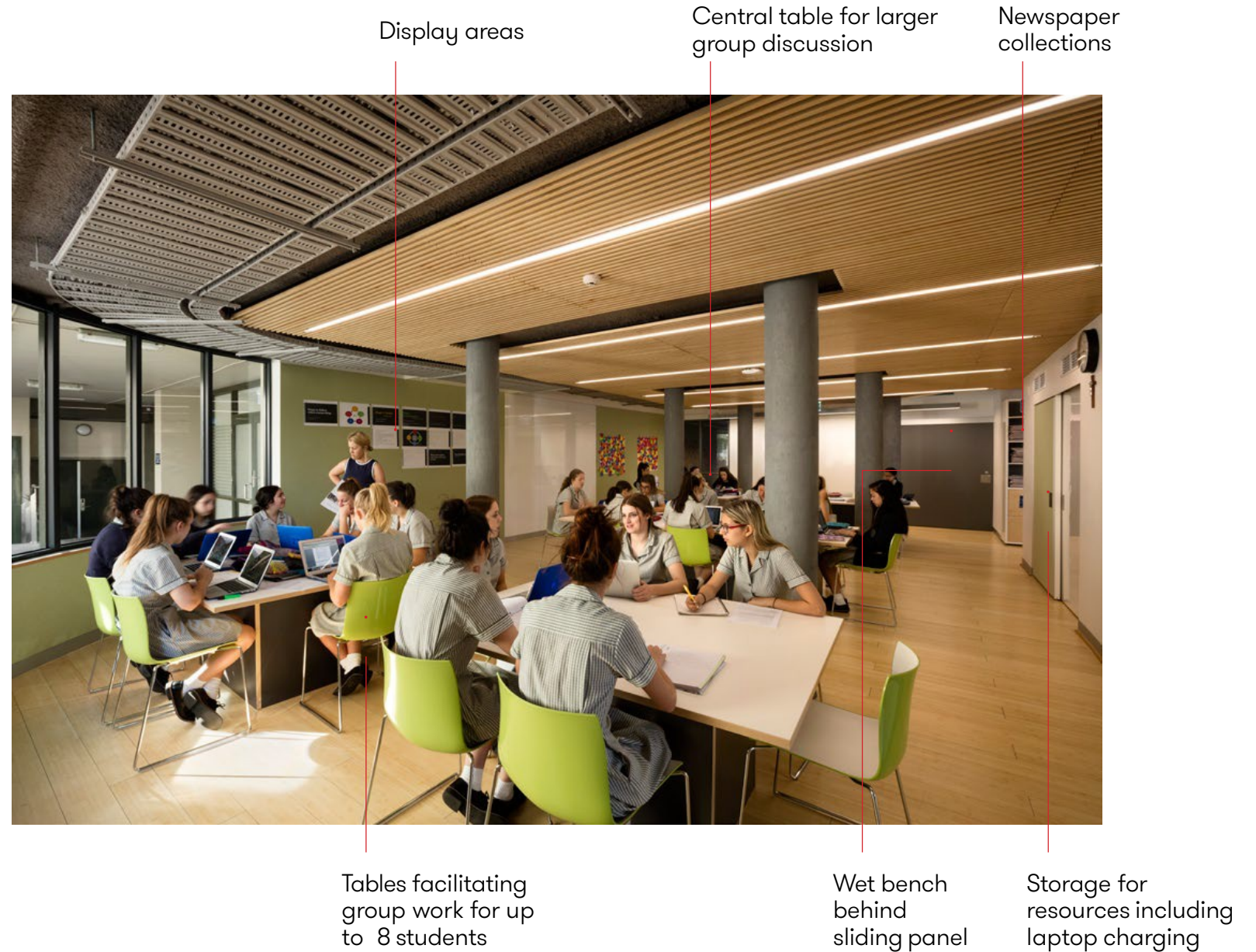
- Large group collaborative space
- Independent + Interdependent group work
- Creative project space

Facilities

- Wet bench
- Multiple focus points + working walls
- Resource storage, including laptop charging

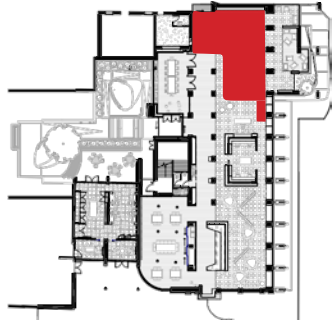
Learning experience

- Small + large group discussion
- Collaborative project work
- Individual + Collaborative research + discussion



Sophia Library

Wider Reading Amphitheatre



Wider Reading Amphitheatre

Purpose

- Large group discussion
- Presentation + watching film
- Reading + relaxing

Facilities

- Large screen
- Writable surfaces
- Tiered seating for 25 people

Learning experience

- Peer to peer presentation
- Use of multi media presentation
- Group discussion

Magnetised pivoting screens to think tank for display of work + resources



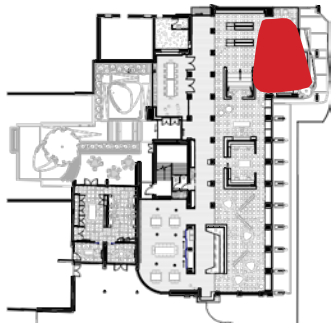
Small meeting area
for staff + students

Fiction collection
shelving + display

Amphitheatre seating
for 25 students

Presentation screen
+ whiteboard

Sophia Library Reading Lounge



Reading Lounge

Purpose

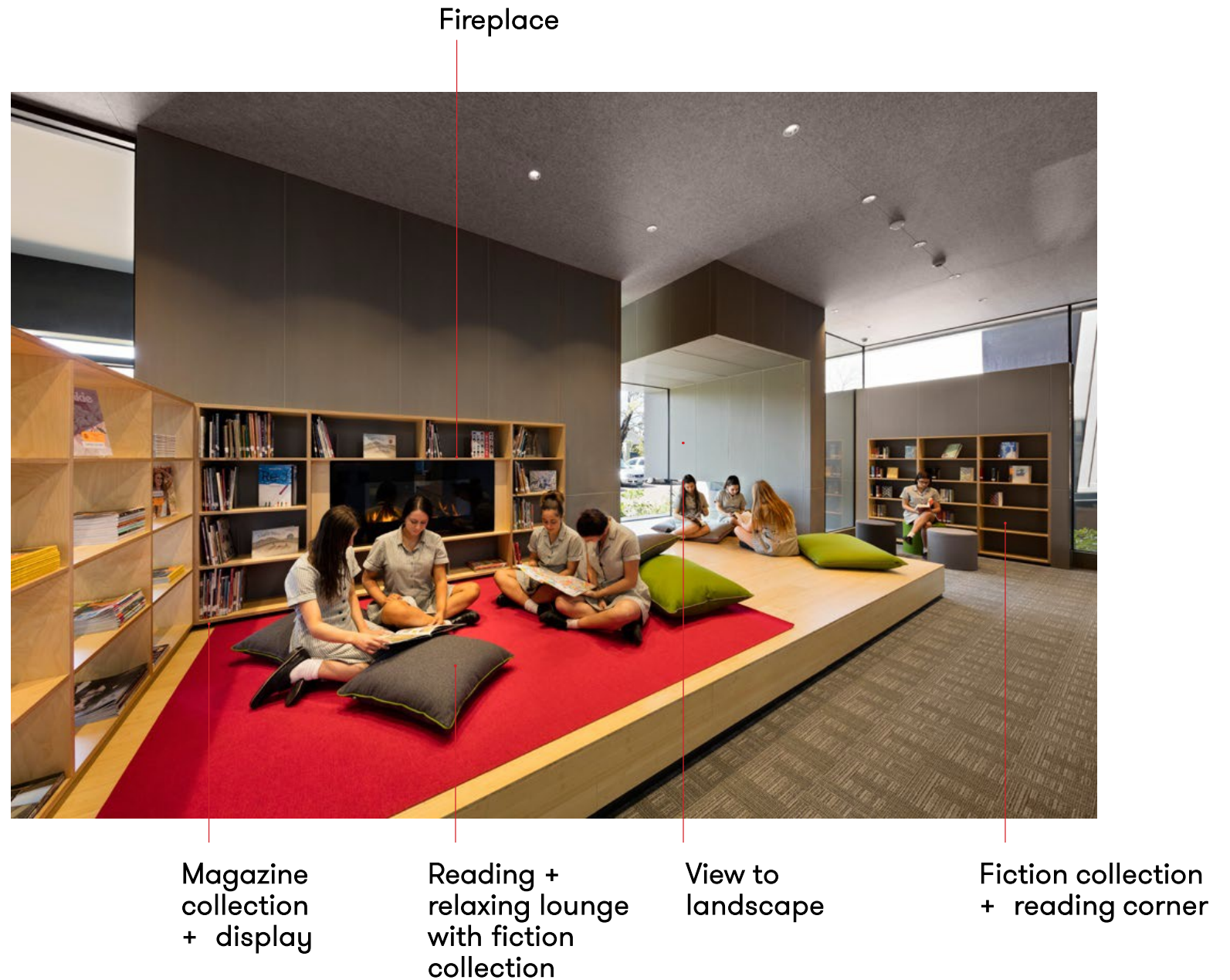
- Relaxing + quiet environment
- Fiction + magazine display + collection
- Informal reading area

Facilities

- Display + collection shelving magazine
- Lounge, comfortable seating collection
- Fireplace + views to garden + display

Learning experience

- Reflection + withdrawal
- Engage with text in the form of fiction, picture book + magazine collections



Fireplace

Magazine
collection
+ display

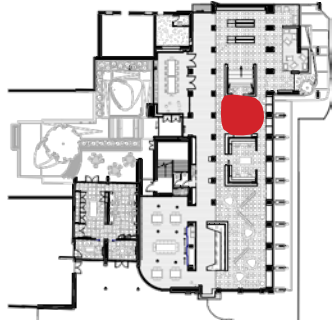
Reading +
relaxing lounge
with fiction
collection

View to
landscape

Fiction collection
+ reading corner

Sophia Library

Entry + Information Point



Entry + Information Point

Purpose

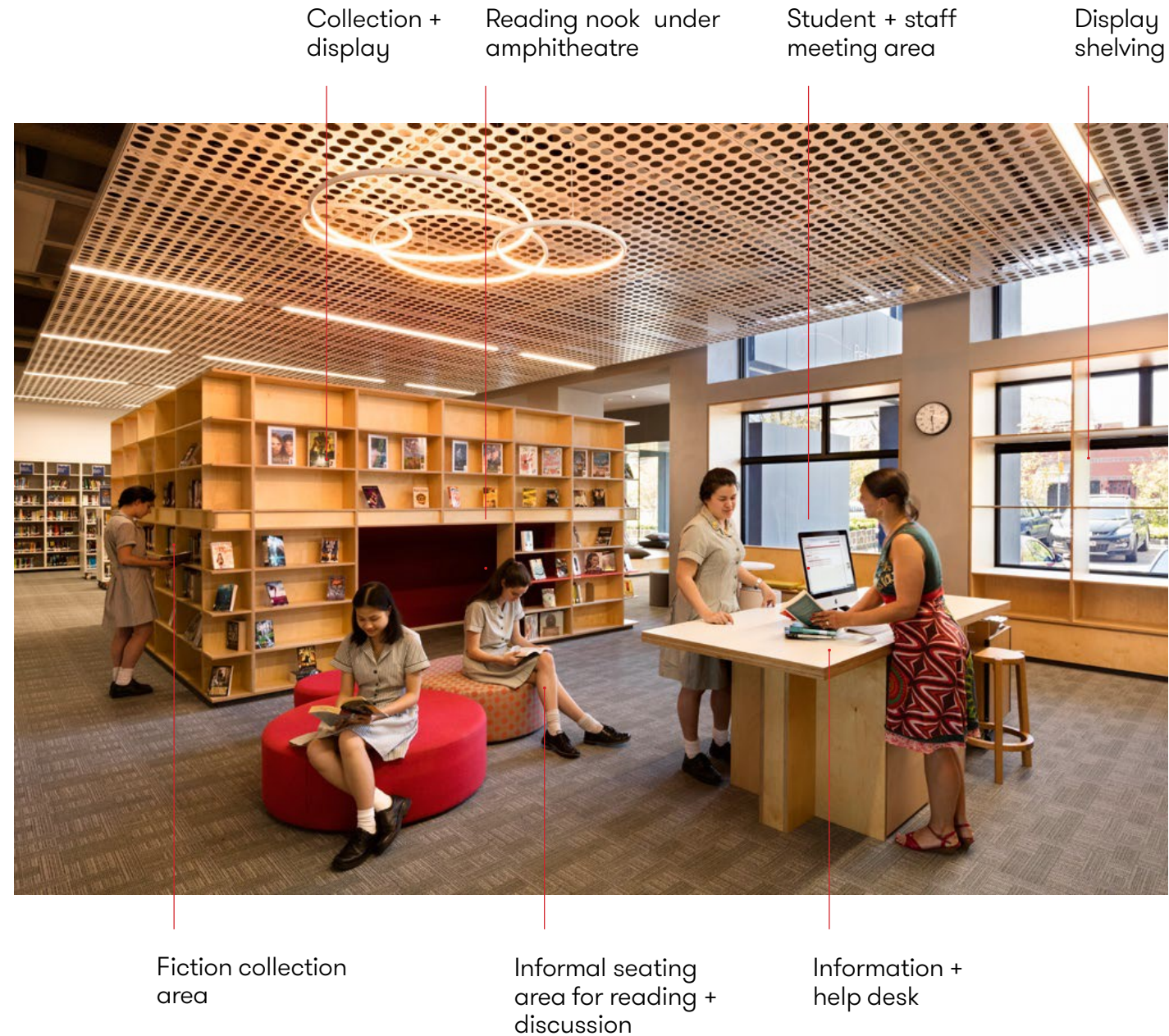
- A welcoming entry for the library
- Spaces for staff + students to work side by side
- Display of new releases, information and student work

Facilities

- Help desk + self check out station
- Informal + formal meeting areas
- Access to print station, bag store + entry

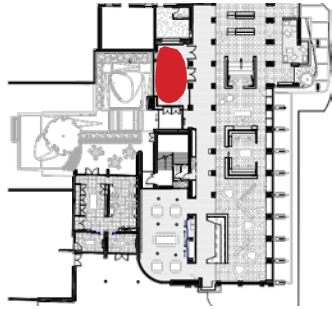
Learning experience

- Engage with peer work + ideas
- Work side by side with library staff
- Experience reading + research in both physical + digital context



Sophia Library

Think Tank



Think Tank

Purpose

- Meetings, seminars, group discussion
- Workshopping + brainstorming
- Presentation + instruction

Facilities

- Large screen with whiteboard
- Pinboards for display of work + resources
- Fixed + mobile furniture to maximise flexibility

Learning experience

- Democratic discussion + debate
- Student led seminars + presentation
- Independent study + group work

View to
library entry

Windows used as
writable surfaces

Bench seat with visual
connection to library courtyard



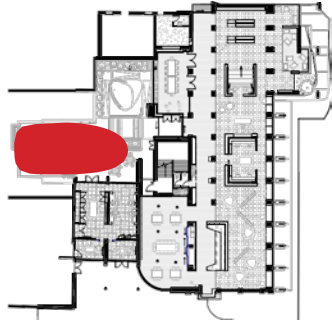
Informal seating to enable
large group use of space

Meeting table for
up to 16 people

Pinboard for display of
resources + student work

Sophia Library

Library Courtyard



Library Courtyard

Purpose

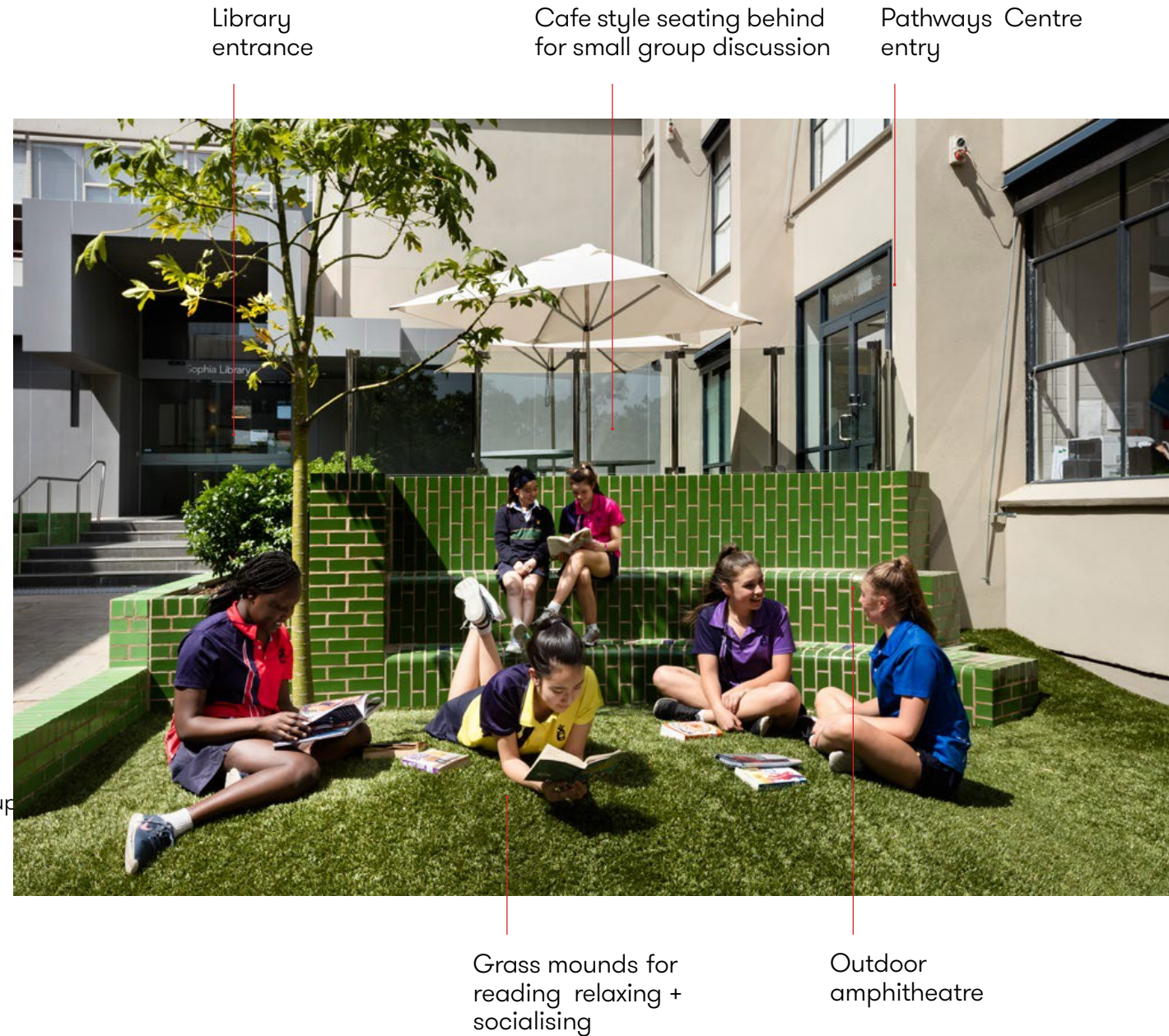
- Social learning + recreational areas
- Extend library beyond formal entry
- Provide a variety of outdoor learning settings

Facilities

- Amphitheatre
- Cafe style seating with shade
- Grass mounds + areas for small group

Learning experience

- Reading + relaxing
- Meetings + discussion
- Socialising + study



Library
entrance

Cafe style seating behind
for small group discussion

Pathways Centre
entry

Grass mounds for
reading relaxing +
socialising

Outdoor
amphitheatre



Centre for Learning & Innovation

carey baptist grammar school

what we want to achieve in this project

- 1. library leading their contemporary teaching and learning practices**
- 2. information literacy**
- 3. library embedded within a hub for learning and innovation**

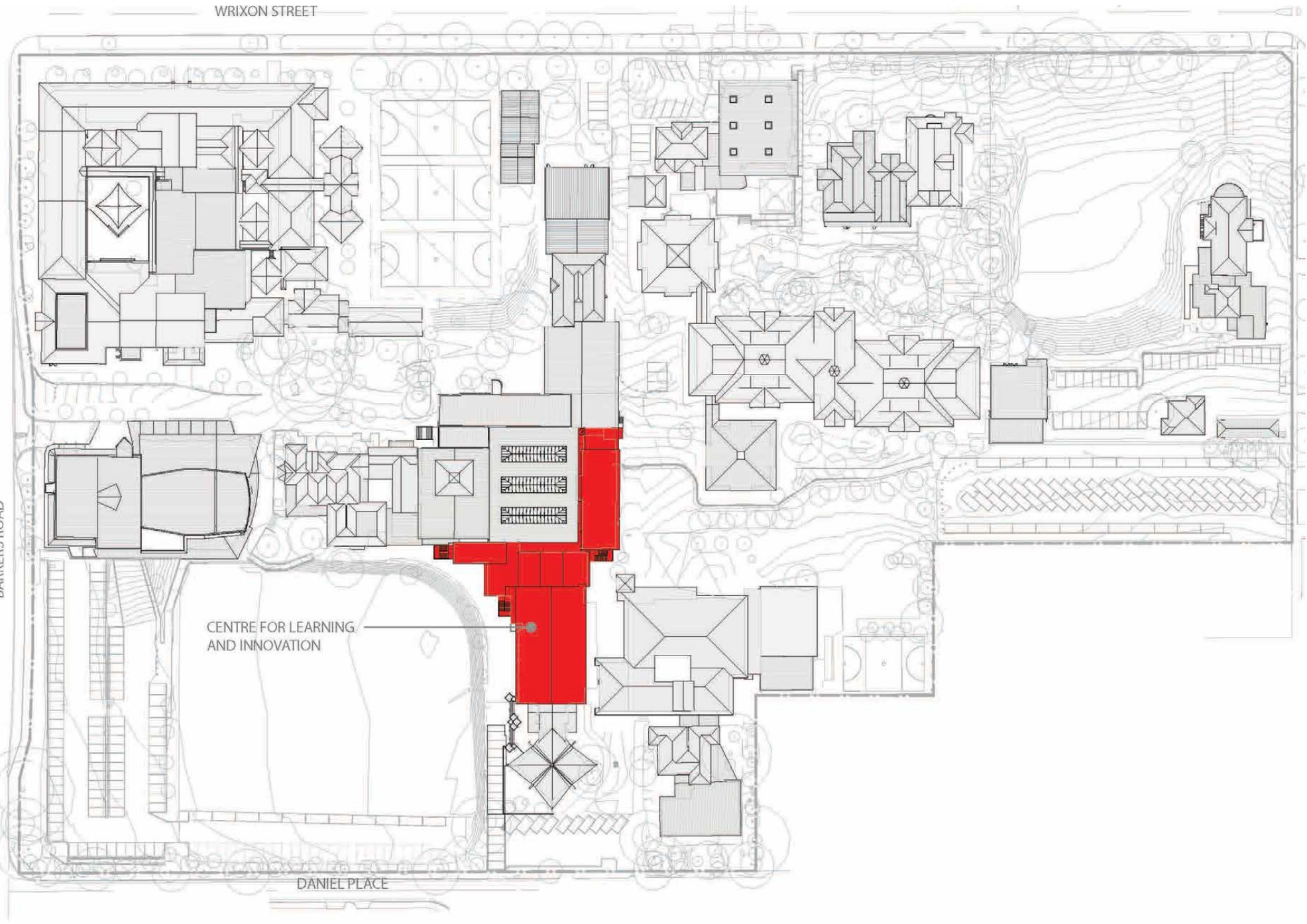
Centre for Learning & Innovation

WRIXON STREET

BARKERS ROAD

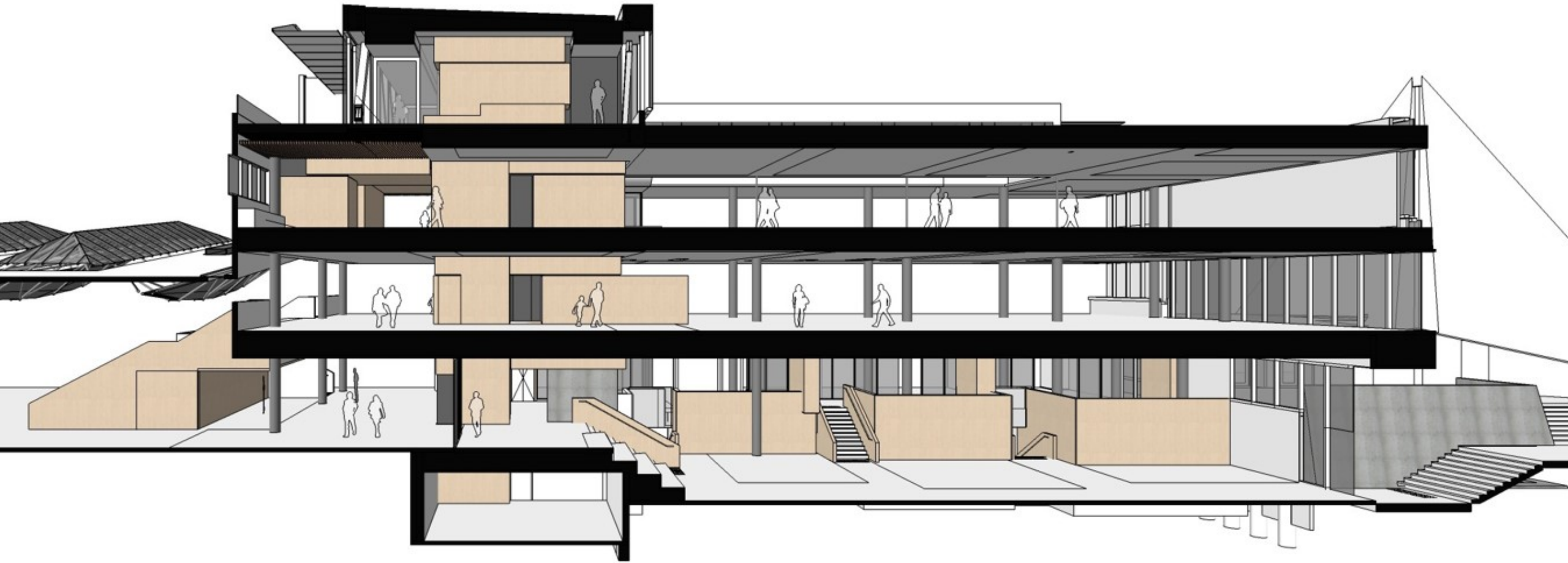
CENTRE FOR LEARNING
AND INNOVATION

DANIEL PLACE

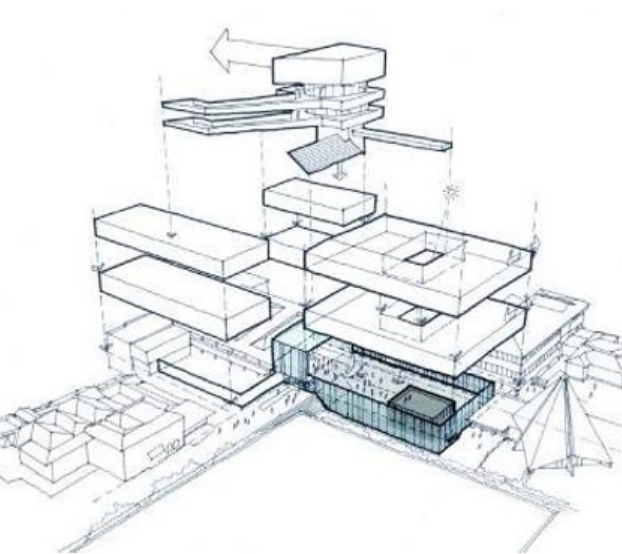




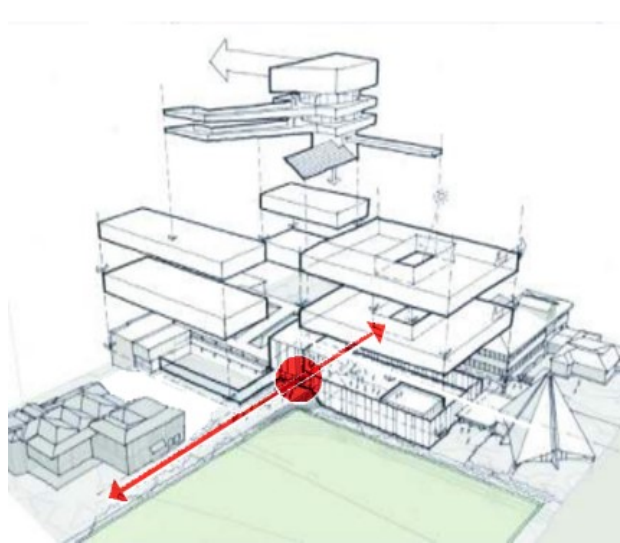
Carey Baptist Grammar School
Centre for Learning and Innovation
Tree of Knowledge Concept



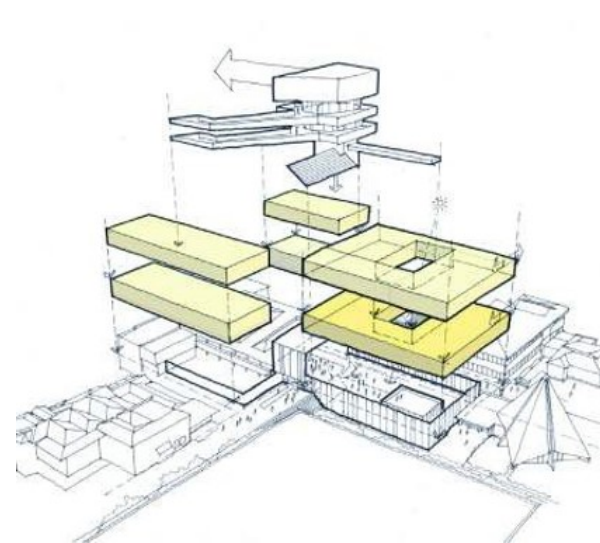
Carey Baptist Grammar School
Centre for Learning and Innovation
Tree of Knowledge Concept



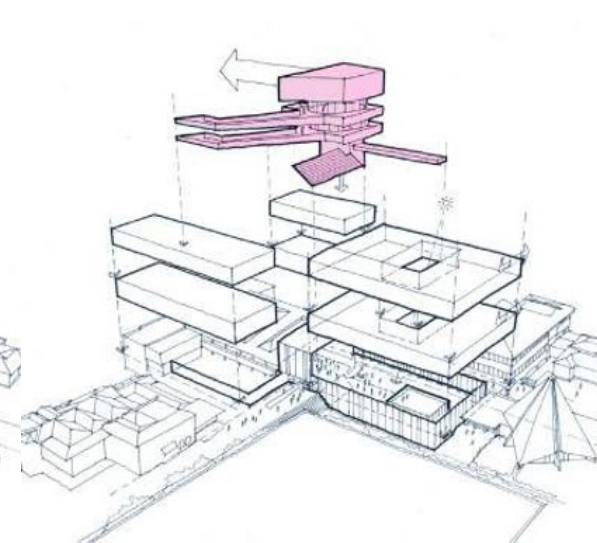
(lower ground level)
Tree Root
Library main floor



(ground level)
Ground (soil)
Library upper floor

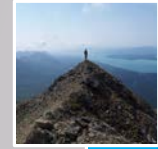


(first & second floors)
Tree Branches
General learning spaces



(roof top level)
Tree Trunk
United Nations Room

library brief: functions



mountain top

- **Physical & digital displays**
- a place for shouting out, celebrating achievements
- Presentation and stepped seating area
- Digital walls and display panels



watering hole

- **Information Commons**
- a place where all must come at some time, and in so doing, exchange information and ideas
- Main entry concourse entrance and associated expert service areas



sandpit

- **Shop front display**
- a place where people play about and experiment
- Promotion area for trialing new e-learning technologies with experts



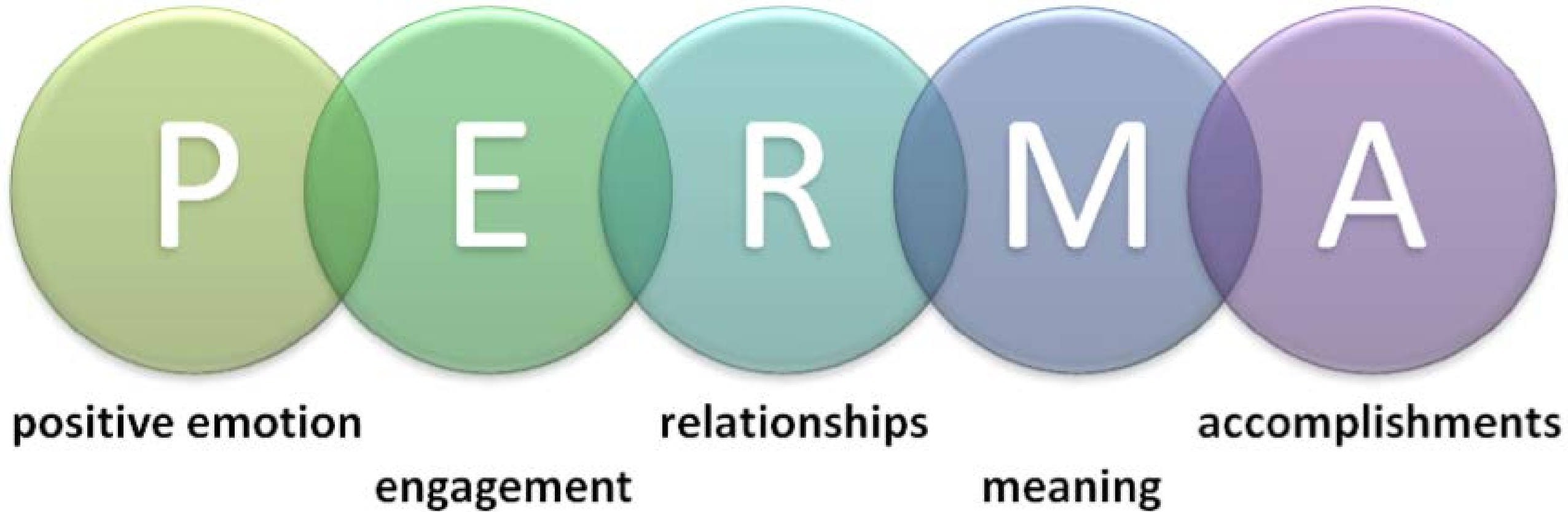
camp fire

- **Class Spaces**
- places where groups settle down, chew the fat together, fire off each others' ideas, dream big dreams, train each other
- Large and small conference rooms

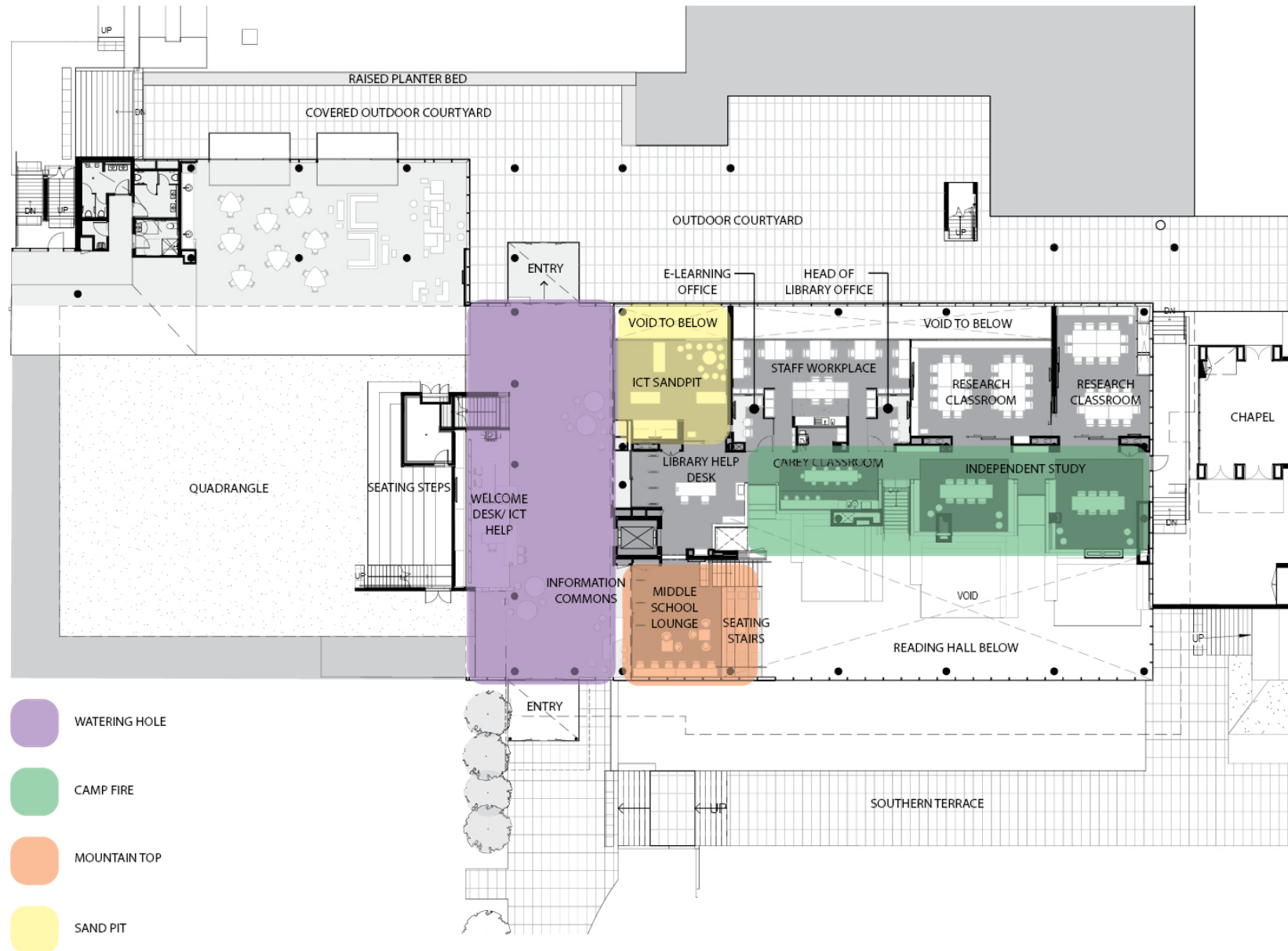


caves

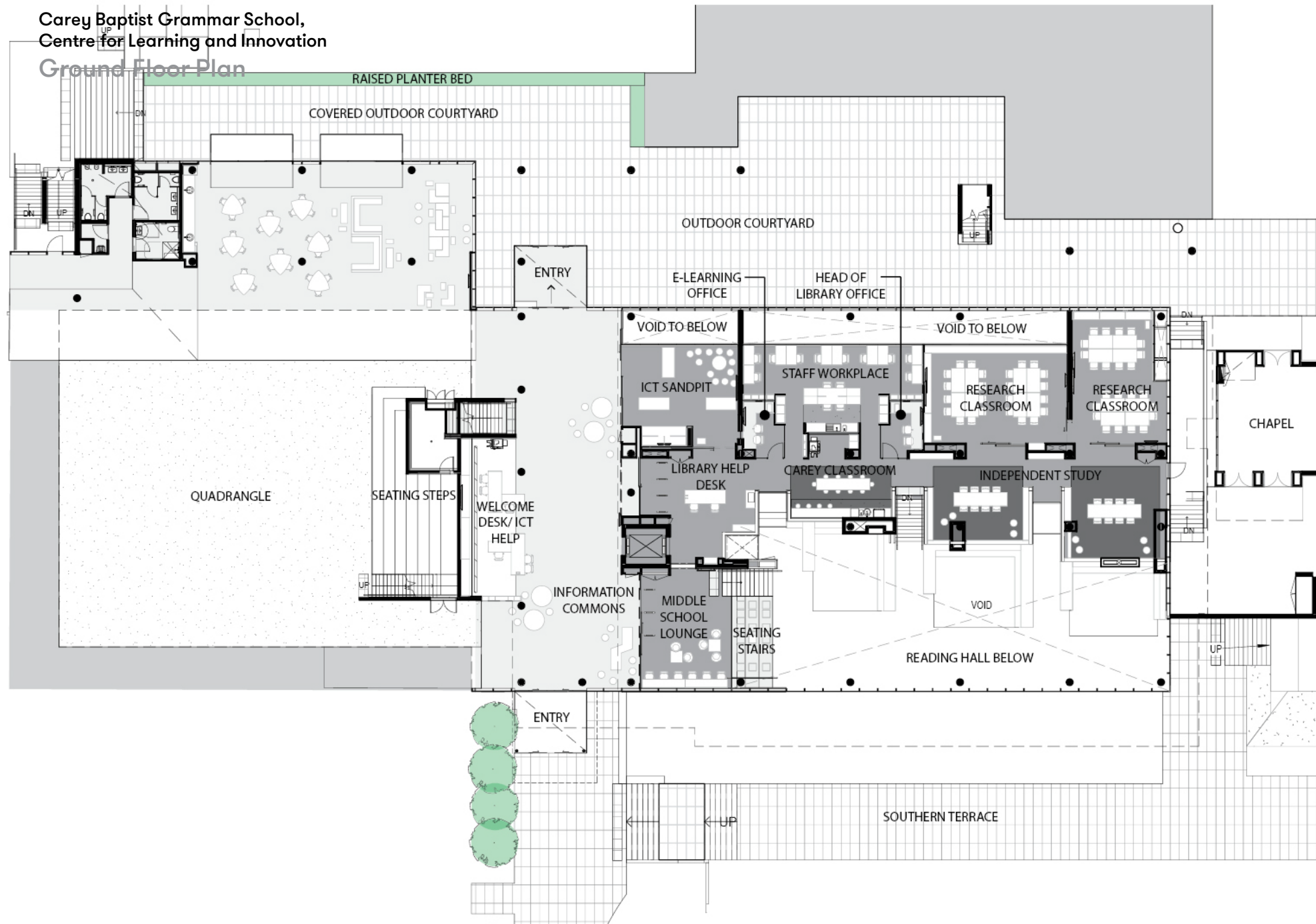
- **Silent Study**
- places where individuals retreat to reflect, meditate, read, write, turn new information into their own knowledge, create new ideas
- Reading lounges, nooks etc



Carey Baptist Grammar School,
Centre for Learning and Innovation
Ground Floor Plan



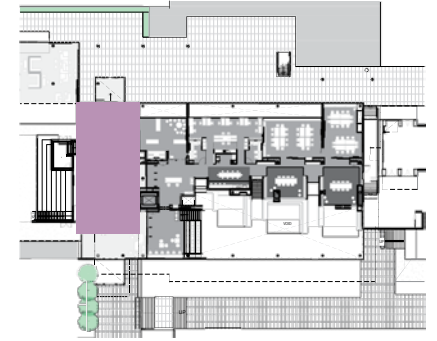
Carey Baptist Grammar School,
Centre for Learning and Innovation
Ground Floor Plan



Carey Baptist Grammar School
Centre for Learning and Innovation
Information Commons

ICT Sandpit

Learning space designed to support testing
& implementation of new technologies



Library Entry

Upper floor entry to library
connecting to help desk & the
Carey cafe

Interactive Projection

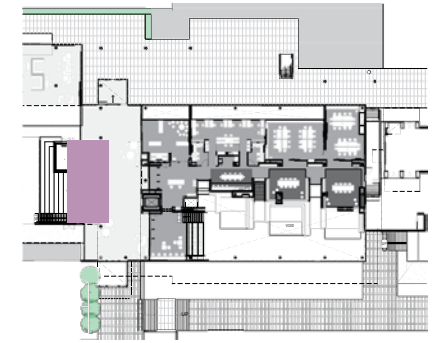
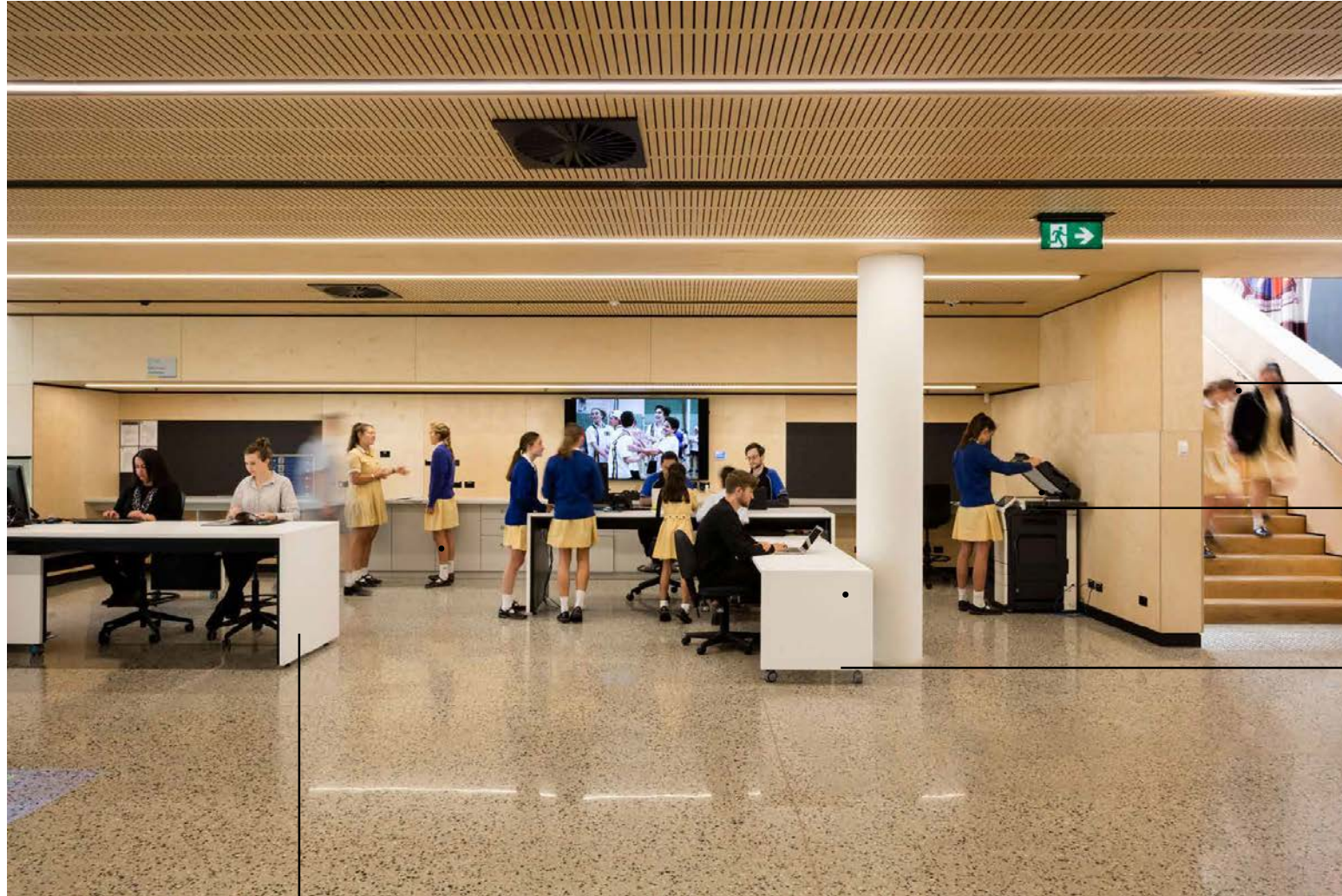
Digital projection for information &
interactive games



Information Desk

Central student information & assistance point

Carey Baptist Grammar School
Centre for Learning and Innovation
Information Commons



Seating Steps

Stairs to level one

Print Services

Student & staff access to print services

IT Help Zone

Meeting & work point for staff & students requiring IT & AV help

Welcome Desk

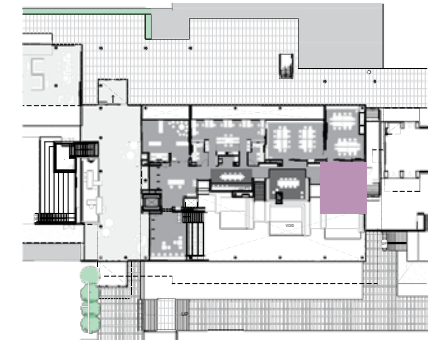
Central student information & assistance point

Carey Baptist Grammar School
Centre for Learning and Innovation
Senior Study Zone



Independent Study Zone

Senior student study areas for independent & small group work



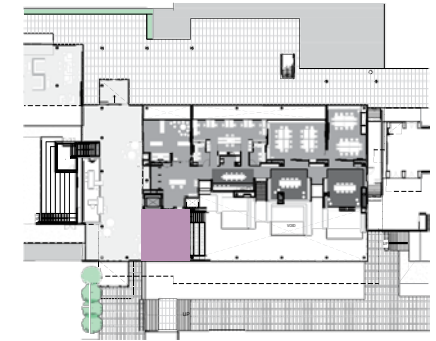
Research Classroom

Timetabled learning spaces for whole of school use

Book Walls

Adjustable book shelving to house collection & provide opportunities for retail style merchandising & display

Carey Baptist Grammar School
Centre for Learning and Innovation
Middle School Lounge



Book Walls

Adjustable book shelving to house collection & provide opportunities for retail style merchandising & display

Middle School Lounge

Meeting & study space for middle school students connecting to entry & help desk

Carey Baptist Grammar School
Centre for Learning and Innovation
Seating Steps

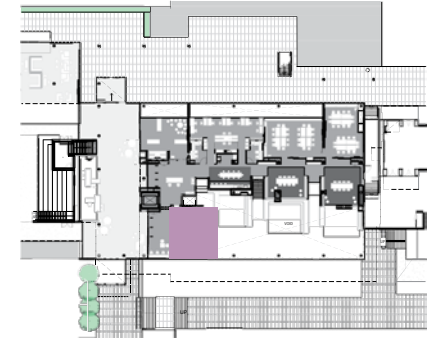
Middle School Lounge

Meeting & study space for middle school students connecting to entry & help desk



Seating Steps

Meeting & presentation space for medium to large groups



Carey Cafe

Student & staff cafe space above

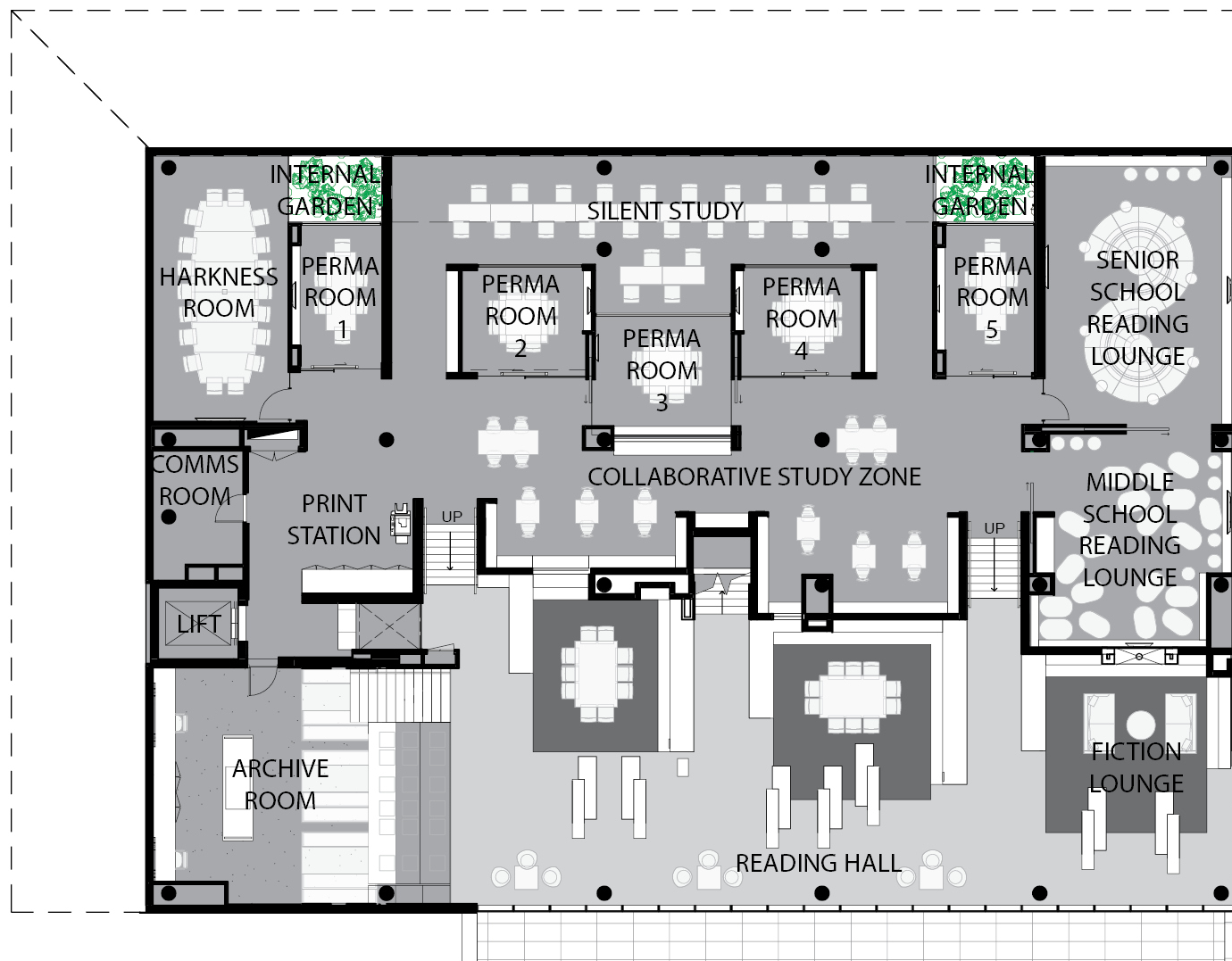
Lower Ground Level

Study & group learning spaces for the whole of school use

Carey Baptist Grammar School,
Centre for Learning and Innovation
Lower Ground Floor Plan



Carey Baptist Grammar School,
Centre for Learning and Innovation
Lower Ground Plan



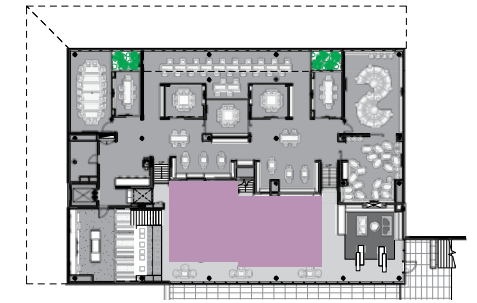
Camp Fires:

- Class spaces
- Conference rooms (L+Sm)
- Harkness Room
- Group tables and benches
- Social areas (chess, board games, cards)

Caves:

- Reflection spaces
- Silent study areas (variety of spaces)
- Reading areas (L+Sm)

Carey Baptist Grammar School
Centre for Learning and Innovation
Collection & Reading Hall



Book Walls

Adjustable book shelving to house collection & provide opportunities for retail style merchandising & display

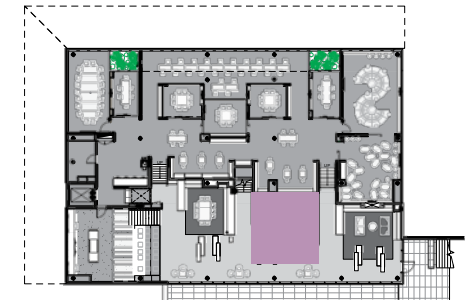
Study Nook

Small group & independent study space surrounded by book walls containing collection

Reading Lounge

Informal settings for independent study, reading & games

Carey Baptist Grammar School
Centre for Learning and Innovation
Study Nook



Book Walls

Adjustable book shelving to house collection & provide opportunities for retail style merchandising & display

Information Point

Access to catalogue & library information for staff & students

Study Nook

Small group & independent study space surrounded by book walls containing collection

Carey Baptist Grammar School
Centre for Learning and Innovation
Fiction Lounge



Book Walls

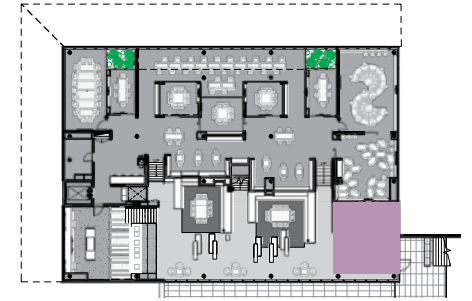
Adjustable book shelving to house collection & provide opportunities for retail style merchandising & display

Fireplace

Gas fireplace with view panel to reading room behind

Fiction Lounge

Lounge setting with fireplace for reading & relaxing amongst fiction collection



Carey Baptist Grammar School
Centre for Learning and Innovation
Book Walls



Independent Study Zone

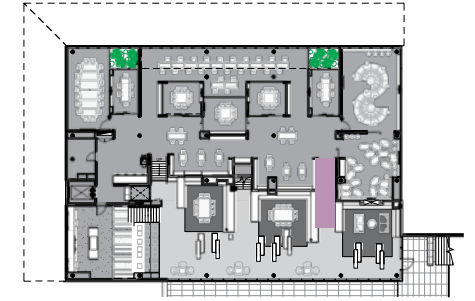
Senior student study areas for independent & small group work

Book Walls

Adjustable book shelving to house collection & provide opportunities for retail style merchandising & display

Lower Ground Level

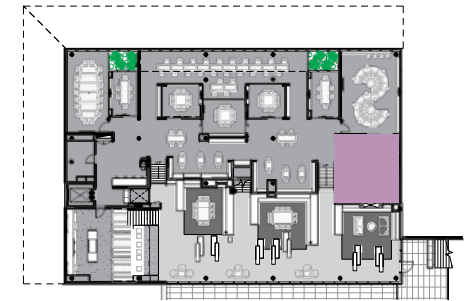
Study & group learning spaces for whole of school use



Carey Baptist Grammar School
Centre for Learning and Innovation
Middle School Reading Room

Reading Room

Middle school learning space to support group reading & discussion



Fireplace

Gas fireplace with view panel to fiction lounge above

Low Height Book Walls

Adjustable book shelving to house collection & provide opportunities for retail style merchandising & display

Lounge Seating

Relaxed, comfortable seating to promote reading & relaxation

Carey Baptist Grammar School
Centre for Learning and Innovation
Lower Ground Study Zones

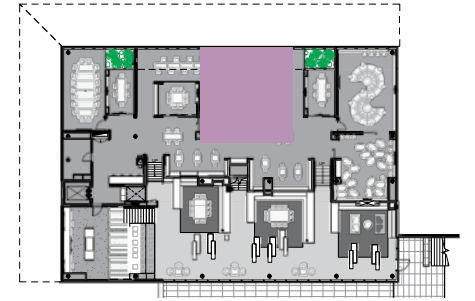
Silent Study Area

Independent & quiet study space
for senior students



Collaborative Study Zone

Open & collaborative space for small groups & independent study



PERMA Rooms

Five seminar spaces themed to align with the PERMA model of wellbeing; positive emotion, engagement, relationships, meaning & accomplishment

Carey Baptist Grammar School
Centre for Learning and Innovation
Silent Study Area

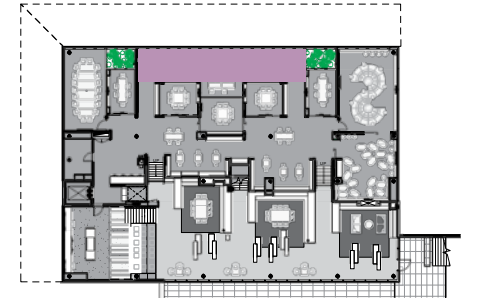


Light Well

Double height space
to provide daylight
access to study area

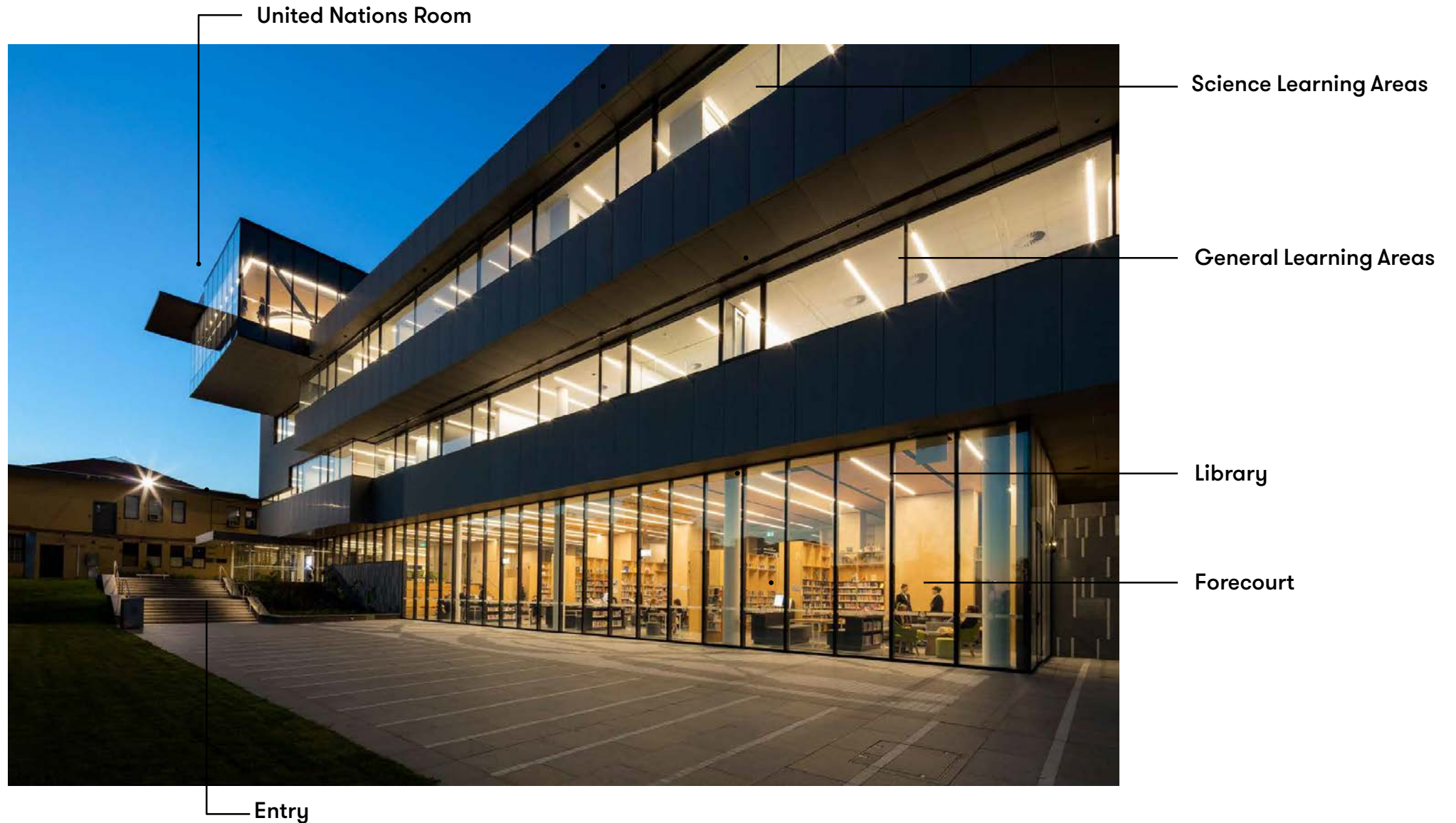
Silent Study Area

Independent & quiet study
space for senior students





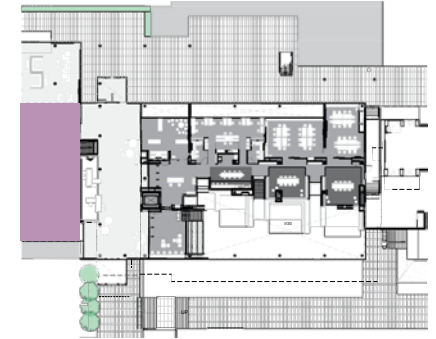
Carey Baptist Grammar School
Centre for Learning and Innovation
Exterior



Carey Baptist Grammar School Centre for Learning and Innovation Senior School Quad & Seating Steps

Study Zone

Northern senior study zone connecting to courtyard beyond



Level One

General learning areas

Seating Steps

Gathering & presentation space incorporating stair connection to level one

Information Commons

Central student information & assistance point

Senior School Quad

Whole of senior school gathering, performance & recreation space

Common themes?

School libraries:

1. what is a library in the context of 21C school?
2. metamorphosis of current libraries based on strong conceptual models
3. direct connection to teaching and learning pedagogies
4. varied, interconnected, purposeful spaces
5. de-institutionalised and de-privatised
6. technology rich and pervasive
7. book collections distilled
8. collaborative, creative, social
9. important campus hub
10. silence vs buzz



765 school libraries by 2026!

Opportunity
Responsibility
Legacy

Change won't wait for us

