



Chifley Library Flood: challenges and opportunities

Roxanne Missingham

ed Tools



ACTmapi
Homepage



Open Map
Information



Switch Map



Help - ACTmapi
YouTube Channel



Print



Pan



Zoom In



Zoom Out

Ret
n



ify



Point



Edit



Distance



Plot Coordinates



Export



Bookmarks



Share



Linked Maps

Map Information

OS

level of flooding that can be
major flood event. It identifies
flooded and the probable depth
of the water, right down to

[line flooding in the Australian](#)



On a dark and stormy morning



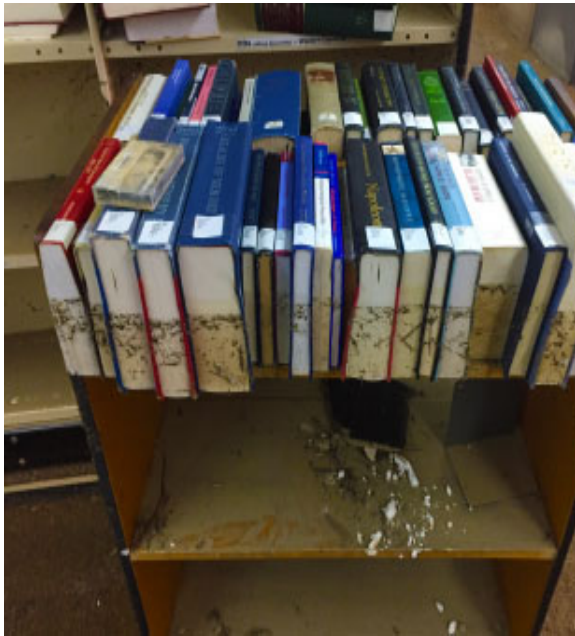
Day 2 – view from the library – flood was Sunday morning 25 February

<http://www.anu.edu.au/news/all-news/updates-about-the-flooding-on-anu-campus>

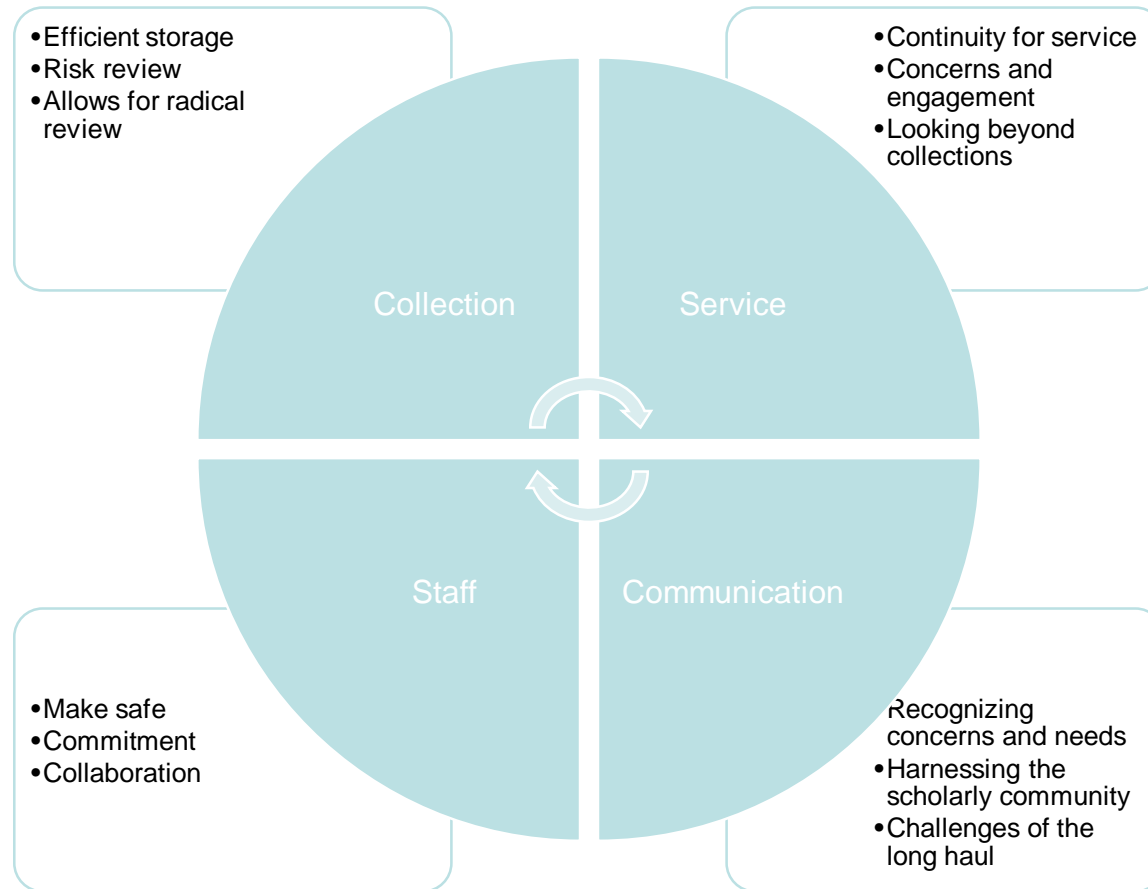
Background

- Sullivans Creek had been rerouted for the Library to be built
- JB Chifley Library celebrated its 50th anniversary Thursday before the flood
- Summer – high humidity (over 70%) & temperature
- Unusual downpour
- Dehumidifiers and fans operated for 3.5 months 24x7 to reduce mould level

More than a metre of water for 3 days



dimensions



Staff

- Importance of recognising the work of staff over decades to build the collection
- Staff from Chifley Library were accommodated elsewhere and great support was provided by other staff
- Extraordinary achievements in delivering services and saving material from fantastic dedicated staff
- Archives staff had deep conservation knowledge

Collection



- Collection was highly efficiently stored in very full compactuses
- Build in a model of academic recommendation
- Opportunistic historic acquisitions



	Titles	Items
Monographs (A – DU)	90,293	111,738
Pamphlets (inc large pamphlets)	1,759	1,881
SUBTOTAL – Monographs and pamphlets	92,051	113,618
Reference	1,735	
Serials (inc reference sers and large sers)	3,078	13,521 volumes and 73,913 issues (est)
Audio-visual	1,323	1,891
Official documents (inc OD reference)	5,874	
Microform collection	5,396	14,596 mfm 35,674 fiche

What should our collection be?

- Flood Advisory Working Group with discipline representatives
- Time to be brave – have new conversations with academic community
- Commit to rebuild be take consideration of reality and opportunity to think holistically
- Understand and listen to academics grieving the loss

Rebuild plan

Stage 1: Immediate replacement

2 day loan material

Material required for courses

Priority PhD and research material

Note: purchases will need to be made from existing budget and material will be stored on level 2 of the Chifley Library

Stage 2: Medium replacement

Material designated as must have on campus in semester 1 or 2 by academics

Note: purchases will need to be made from existing budget and material will be stored on level 2 of the Chifley Library

Academic advisory committee

Stage 3: Post insurance claim

Material previously held and replaced - academic consultation

Material replacing previous collection titles with more relevant/up to date versions - academic consultation

Note: purchases will be post insurance claim and storage to be determined

Donations will be welcome

Indigenous collection build example

- 1 title not held in any other library – still in freezer
- New titles purchased for teaching
- Jack Waterford and Susan Bennett collection
 - 139 replacement works
 - 529 titles not previously held
- All old ANU Press titles digitised

Our wonderful donors



Find & access

Collections

Research & learn

Using the library

News & events

About

Services for

» About » Planning & governance » ANU Library intranet » Chifley flood donation appeal

Chifley flood donation appeal



We are committed to rebuilding the collection and improving resources for research and study.

I'm sure we are all still grieving over the devastating events of 25 February. On behalf of the Library Advisory Committee I can assure you we are committed not only to rebuilding the collection but also to improving it. Both Roxanne and I have spoken to the University Executive and Council and it's clear we can draw upon a lot of support to achieve this. We're optimistic. And, it goes without saying, we'll be moving forward in full consultation with you. A working party comprising representatives of each of the disciplines affected by the flood has been established to provide a formal mechanism for this. We're extremely grateful for the many offers of support, including donations of books, that we've received. To ensure that this is managed properly the Library staff have toiled long and hard to produce a comprehensive list of all the books that were destroyed. If you would like to donate any books on the list we want them! It will be some time before we have space to take them but if you provide details on the link below be assured we will be in touch as soon as possible.



Donate

Donate materials to ANU Library »



Suggest

Make your suggestions for additional materials for the JB Chifley Library in the subject areas affected by the flood »



Donate dollars



Dear Colleagues

Thank you for all your support through the time after the flood that affected the Chifley Library on Sunday 25th February 2018.

Library staff and community members were devastated by loss of such an important part of our collection, built over the last 50 years by academics and library staff to support world class research and study.

We are now working on the second stage of rebuilding the Chifley Library collection – focusing on identifying ways of replacing the collection, in particular the monographs. We continue to work on the insurance claim and discuss the building work that will need to occur. Level 1 of the library will require significant work to reopen, and given the environment, we are not likely to house collection material on that floor.

The replacement of the collection will need to be carefully managed. The material on level 3 and 4 will need to be completely reorganised to accommodate replacement books. The collection at Hume needs to be assessed (and some of it deselected in accordance with the existing principles and practices) to make accommodate those resources that need to move from Chifley Library.

Number of titles replaced and new

- Donations & acquisitions

Action	Number
Donated on website	1773
Processed & available on shelf	1376
Damaged awaiting CML assessment	25
Duplicates awaiting CML assessment	48
Duplicates returned to donors	139
Waiting to be processed	185
Other flood replacements	
Purchased from normal suppliers	1067
Purchased from Barry's Books	121
Purchased from Jack Waterford	139
TOTAL	1,327
TOTAL REPLACED	3,100
TOTAL REPLACED & AVAILABLE 8.4.19	2,703

- And working on joining Hathi Trust

Communications

- Absolutely key
- Early and regular communication to:
 - Library staff
 - Library Advisory Committee
 - University Leadership group
 - All deans
 - All academics
 - University staff



- Broader academic community
- General Canberra community
- Scholars overall

Communications

- Part of overall university comms
- Used email, radio, open meetings, advisory working group meetings, staff meetings
- Many drop in chats
- Recognising it was not just our tragedy
- Cannot overstress the importance of communication

Ongoing

Update on rebuilding the JB Chifley Library collection - March 2019

An update from University Librarian Roxanne Missingham

4 MARCH 2019



Key issues

- We had to be smart and quick
- Very few staff could engage with the process directly – contractors organised by Building division were fabulous
- Local disaster group had facilities we could not use because of the size of the disaster

Insurance

- Very complex
- Takes a long time
- Academics expectations of immediate replacement need much communication

A year on

1. Size of disaster adds complexity, standard business continuity plan is not enough
2. Expert advice assists in tough decisions
3. Rebuilding is slow, collaboration with academics & broader community is vital
4. We need a proper collection storage solution (Campus Planning Committee has agreed to work on costing)

